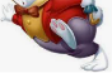


Alicia y sus amigos

Flauta B

$\text{♩} = 100$

A $\text{♩} = 140$ **2**



Pasos (perseguimos al conejo...) *Impro Cromática (descendente...)* *Aire (caemos por el agujero...)* **f**

7 **El conejo...**



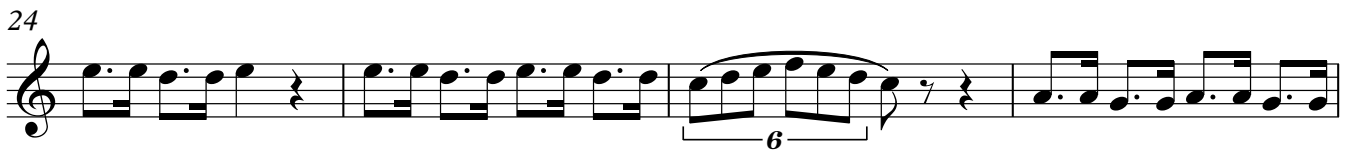
7



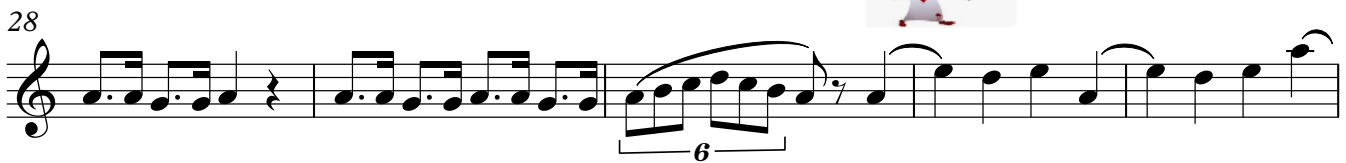
19



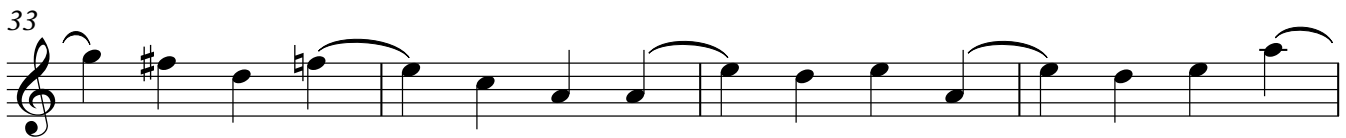
24



28

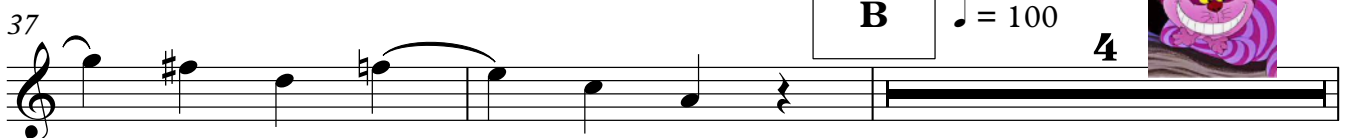



33



37

B $\text{♩} = 100$ **4**



flautalibre

43



49



54



C

57 ♩ = 80 La reina...

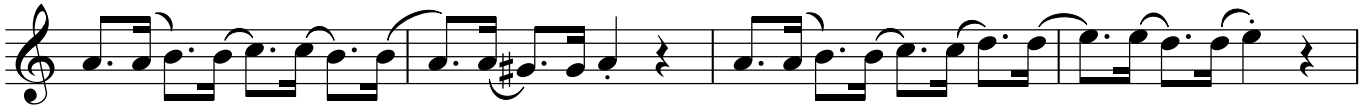


64

D ♩ = 140
2



70 El conejo...



74



78

